

## Renata

### Fitting Instructions

Steel Flat Tube Towel Rail

Please read these instructions and terms and conditions carefully prior to installation. Failure to do so may invalidate the warranty.



## Drawings

fig. 1

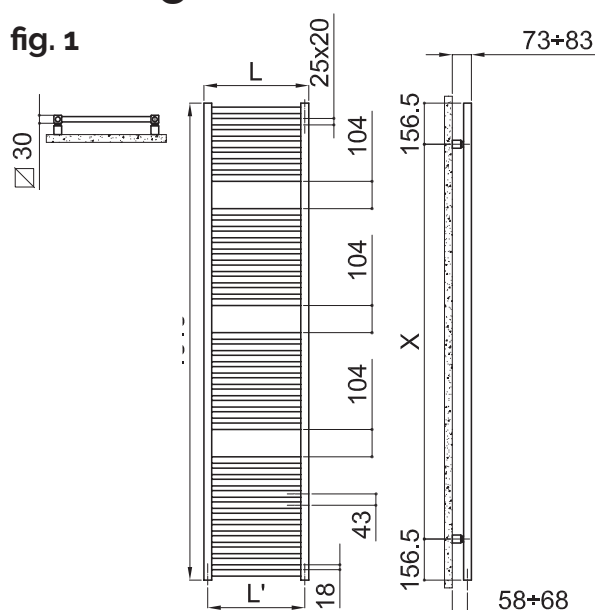
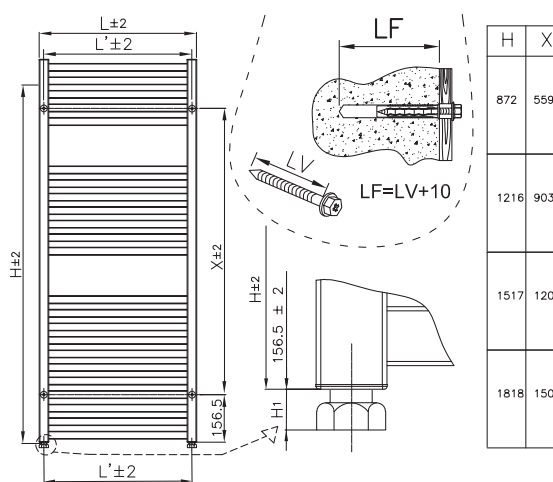


fig. 2



## Pipe Centres

Pipe centres left to right	=	width less 30mm
Pipe centres from wall	=	58mm - 68mm
Depth from wall	=	73mm - 83mm

## 1. Unpack & Inspect

This product should have reached you in perfect condition. Please carefully unpack and inspect this radiator and all fittings. Your point of purchase must be notified of any shortages or damage within 28 days of delivery.

For further information please see terms and conditions at the bottom of the next page.

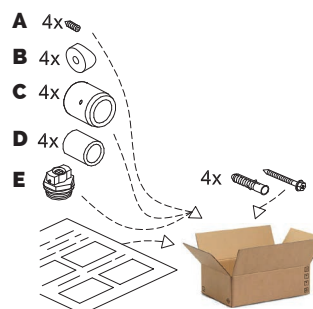
## 2. Contents

### You should have:

- 1 Radiator
- 4 Wall Bracket
- 1 Manual Airvent

### You will need:

- Electric drill & bits
- Tape measure
- Screwdriver
- Spanner
- Hex Keys
- Spirit Level
- PTFE Tape
- Valves

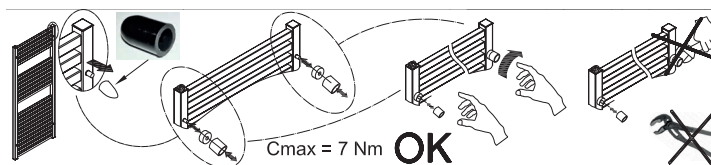


The fixing kits (screws and dowels) are suitable for compact walls or hollow bricks. Please ensure suitable fixings are used for the correct wall type.

### 3. Installing Radiator

Remove rubber protectors on the studs on the rear of the towel rail. Slide spacer "B" onto stud followed by threaded bracket stud "D".

**NB this needs to be hand tightened only, DO NOT USE PUMP PLIERS.**



Mark position of brackets on wall. From left to right, width of towel rail less 30mm (15mm from each side)

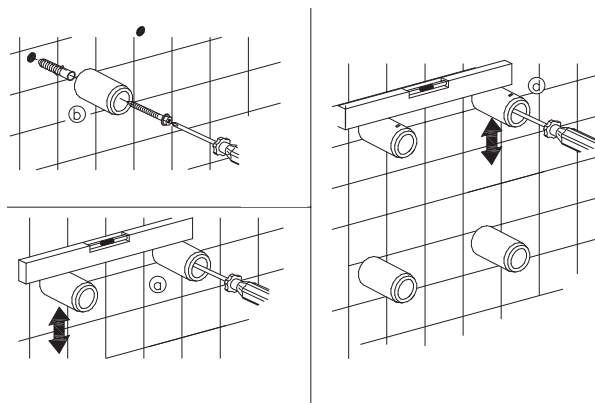
From top to bottom Measure 156.5mm from required base of the towel rail for the bottom fixing. Follow diagram to measure from bottom fixing to top fixing. See **fig 2** (shown on 1st page) Drill and fix bracket sleeves and check they are level.

Loosely fit grub screw "A"

Lift towel rail and insert the rear studs into the bracket sleeves and tighten grub screws. Insert air vent and connect pipework.

**PLEASE NOTE:**

Systems using micro bore pipe work must have adequate pressure and flow rates for the number and style of radiators on the system.



**PLEASE NOTE :**

It is essential that all brackets are level to ensure a vertical alignment for connecting the pipework.

### 4. Hang & Commission Radiator

**Please Note:**

In accordance with Part L1 2006 of the Building Regulations and BS7593:1992 code of practice for the treatment of hot water and central heating systems, we strongly recommend flushing the heating system post installation of new radiators and then adding the correct quantity and type of inhibitor for use with your radiator and system to prevent corrosion. Damage caused to systems not protected by a suitable inhibitor will not be covered by manufacturer's guarantee.

### Technical Specifications

<b>Materials</b>	Steel
<b>Connections</b>	½" flow and return.
<b>Test pressure</b>	5.2 Bar
<b>Testing authority</b>	CE/UKCA Approved and certified to BS EN442
<b>Maximum operating pressure</b>	4 Bar
<b>Maximum working temperature</b>	95°C
<b>Packaging</b>	Wrapped in polythene and boxed

### Guarantees & Liabilities

This product is guaranteed for 5 years. As we are not the manufacturers of this product we will take all reasonable endeavours to make over to you the benefit of any warranty or guarantee given by the manufacturer.

The guarantees in all cases are subject to the products being installed in accordance with British and or European standards as well as these fitting instructions. The guarantees in all cases are restricted to the free of charge replacement or repair of the failed product only. Our liability will under no circumstances extend beyond the repair or replacement of the product

### Terms & Conditions

All products must be inspected once removed from the packaging and your point of purchase notified within 28 days of delivery of any scratches, blemishes or other damage. Your point of purchase will then agree appropriate action.

Imperfect radiators should therefore not be fitted and we will not accept responsibility for replacement of scratched or damaged radiators once they have been fitted. This includes any consequential loss or cost of fitting.

If we are not notified within 28 days of the date on the signed delivery note then it will be deemed that we have fully complied with our obligations and claims will not be considered.

Failure to comply with any of the above may invalidate any claims. We recommend that after you check the product on delivery that it is stored in its packaging to prevent damage prior to installation, we cannot accept responsibility for items damaged after delivery.

For full details of our Terms and Conditions please visit [www.radiatorsdirect.co.uk](http://www.radiatorsdirect.co.uk) or call us on 01342 305555.